



Title Plan - LT 461935

Survey Number LT 461935
Surveyor Reference E17975 Rosemeryn Stage 3
Surveyor Kevin Martin Hayes
Survey Firm Davie Lovell-Smith Ltd
Surveyor Declaration

Survey Details

Dataset Description Lots 130, 131, 135-148, 155-159, 205-209, 253-265, 319-329, 349, 350, 600, 601, 605, 613, 614, 619, 622-624, 703, 803 & 813 being subdivision of Lots 25 & 27 DP 432078 & Lot 2 DP 364266 and proposed easement over RS 39514

Status Initiated

Land District Canterbury **Survey Class** Class A

Submitted Date **Survey Approval Date**
Deposit Date

Territorial Authorities

Selwyn District

Comprised In

CT CB7B/1326
CT 582121
CT 523583
CT 268936

Created Parcels

Parcels	Parcel Intent	Area	CT Reference
Lot 130 Deposited Plan 461935	Fee Simple Title	0.0511 Ha	608359
Lot 135 Deposited Plan 461935	Fee Simple Title	0.0601 Ha	608361
Lot 136 Deposited Plan 461935	Fee Simple Title	0.0574 Ha	608362
Lot 137 Deposited Plan 461935	Fee Simple Title	0.0574 Ha	608363
Lot 139 Deposited Plan 461935	Fee Simple Title	0.0708 Ha	608365
Lot 140 Deposited Plan 461935	Fee Simple Title	0.0708 Ha	608366
Lot 141 Deposited Plan 461935	Fee Simple Title	0.0708 Ha	608367
Lot 142 Deposited Plan 461935	Fee Simple Title	0.0700 Ha	608368
Lot 143 Deposited Plan 461935	Fee Simple Title	0.0725 Ha	608369
Lot 144 Deposited Plan 461935	Fee Simple Title	0.0648 Ha	608370
Lot 145 Deposited Plan 461935	Fee Simple Title	0.0631 Ha	608371
Lot 146 Deposited Plan 461935	Fee Simple Title	0.0700 Ha	608372
Lot 147 Deposited Plan 461935	Fee Simple Title	0.0702 Ha	608373
Lot 148 Deposited Plan 461935	Fee Simple Title	0.0701 Ha	608374
Lot 155 Deposited Plan 461935	Fee Simple Title	0.0613 Ha	608375



Title Plan - LT 461935

Created Parcels

Parcels	Parcel Intent	Area	CT Reference
Lot 156 Deposited Plan 461935	Fee Simple Title	0.0700 Ha	608376
Lot 157 Deposited Plan 461935	Fee Simple Title	0.0600 Ha	608377
Lot 158 Deposited Plan 461935	Fee Simple Title	0.0600 Ha	608378
Lot 159 Deposited Plan 461935	Fee Simple Title	0.0596 Ha	608379
Lot 205 Deposited Plan 461935	Fee Simple Title	0.0700 Ha	608380
Lot 206 Deposited Plan 461935	Fee Simple Title	0.0734 Ha	608381
Lot 207 Deposited Plan 461935	Fee Simple Title	0.0611 Ha	608382
Lot 208 Deposited Plan 461935	Fee Simple Title	0.0603 Ha	608383
Lot 209 Deposited Plan 461935	Fee Simple Title	0.0603 Ha	608384
Lot 262 Deposited Plan 461935	Fee Simple Title	0.0420 Ha	608394
Lot 263 Deposited Plan 461935	Fee Simple Title	0.0487 Ha	608395
Lot 319 Deposited Plan 461935	Fee Simple Title	0.0542 Ha	608398
Lot 320 Deposited Plan 461935	Fee Simple Title	0.0646 Ha	608399
Lot 321 Deposited Plan 461935	Fee Simple Title	0.0629 Ha	608400
Lot 322 Deposited Plan 461935	Fee Simple Title	0.0603 Ha	608401
Lot 323 Deposited Plan 461935	Fee Simple Title	0.0604 Ha	608402
Lot 324 Deposited Plan 461935	Fee Simple Title	0.0601 Ha	608403
Lot 325 Deposited Plan 461935	Fee Simple Title	0.0617 Ha	608404
Lot 327 Deposited Plan 461935	Fee Simple Title	0.0674 Ha	608406
Lot 328 Deposited Plan 461935	Fee Simple Title	0.0635 Ha	608407
Lot 329 Deposited Plan 461935	Fee Simple Title	0.0615 Ha	608408
Lot 349 Deposited Plan 461935	Fee Simple Title	0.0596 Ha	608409
Lot 350 Deposited Plan 461935	Fee Simple Title	0.0592 Ha	608410
Lot 600 Deposited Plan 461935	Fee Simple Title	0.4115 Ha	608411
Lot 601 Deposited Plan 461935	Vesting on Deposit for Local Purpose Reserve	0.0257 Ha	608412
Lot 624 Deposited Plan 461935	Fee Simple Title	0.0005 Ha	608419
Lot 613 Deposited Plan 461935	Vesting on Deposit for Recreation Reserve (Territorial Authority)	0.4902 Ha	608414
Lot 614 Deposited Plan 461935	Vesting on Deposit for Local Purpose Reserve	0.4628 Ha	608415
Lot 813 Deposited Plan 461935	Vesting on Deposit for Road	0.0445 Ha	
Area A Deposited Plan 461935	Easement		
Area C Deposited Plan 461935	Easement		
Area D Deposited Plan 461935	Easement		
Area E Deposited Plan 461935	Easement		
Area B Deposited Plan 461935	Easement		



Title Plan - LT 461935

Created Parcels

Parcels	Parcel Intent	Area	CT Reference
Lot 605 Deposited Plan 461935	Vesting on Deposit for Recreation Reserve (Territorial Authority)	0.7562 Ha	608413
Lot 326 Deposited Plan 461935	Fee Simple Title	0.0701 Ha	608405
Lot 619 Deposited Plan 461935	Vesting on Deposit for Local Purpose Reserve	0.0242 Ha	608416
Lot 623 Deposited Plan 461935	Fee Simple Title	0.0005 Ha	608418
Lot 622 Deposited Plan 461935	Fee Simple Title	0.0005 Ha	608417
Lot 131 Deposited Plan 461935	Fee Simple Title	0.0692 Ha	608360
Lot 138 Deposited Plan 461935	Fee Simple Title	0.0609 Ha	608364
Lot 253 Deposited Plan 461935	Fee Simple Title	0.0492 Ha	608385
Lot 254 Deposited Plan 461935	Fee Simple Title	0.0547 Ha	608386
Lot 255 Deposited Plan 461935	Fee Simple Title	0.0648 Ha	608387
Lot 256 Deposited Plan 461935	Fee Simple Title	0.1081 Ha	608388
Lot 257 Deposited Plan 461935	Fee Simple Title	0.0608 Ha	608389
Lot 258 Deposited Plan 461935	Fee Simple Title	0.0541 Ha	608390
Lot 259 Deposited Plan 461935	Fee Simple Title	0.0486 Ha	608391
Lot 260 Deposited Plan 461935	Fee Simple Title	0.0462 Ha	608392
Lot 261 Deposited Plan 461935	Fee Simple Title	0.0420 Ha	608393
Lot 264 Deposited Plan 461935	Fee Simple Title	0.0496 Ha	608396
Lot 265 Deposited Plan 461935	Fee Simple Title	0.0728 Ha	608397
Lot 803 Deposited Plan 461935	Vesting on Deposit for Road	1.1875 Ha	
Area F Deposited Plan 461935	Easement		
Area G Deposited Plan 461935	Easement		
Area H Deposited Plan 461935	Easement		
Area I Deposited Plan 461935	Easement		
Area J Deposited Plan 461935	Easement		
Area K Deposited Plan 461935	Easement		
Area L Deposited Plan 461935	Easement		
Area M Deposited Plan 461935	Easement		
Area N Deposited Plan 461935	Easement		
Area O Deposited Plan 461935	Easement		
Lot 703 Deposited Plan 461935	Fee Simple Title	79.1056 Ha	608420
Area P Deposited Plan 461935	Easement		
Area Q Deposited Plan 461935	Easement		
Area R Deposited Plan 461935	Easement		
Area S Deposited Plan 461935	Easement		
Area T Deposited Plan 461935	Easement		



Title Plan - LT 461935

Created Parcels

Parcels	Parcel Intent	Area	CT Reference
Area U Deposited Plan 461935	Easement		
Total Area		<u>85.7420 Ha</u>	



DAVIE LOVELL·SMITH

PLANNING SURVEYING ENGINEERING

Davie, Lovell-Smith Ltd
 116 Wrights Road,
 PO Box 679, Christchurch 1,
 New Zealand
 Telephone (03) 379-0793,
 E-mail: office@dls.co.nz

Our Ref: E17975

D.P.461935

MEMORANDUM OF EASEMENTS

Purpose	Servient Tenement	Shown	Dominant Tenement
Right of way, rights to drain water & sewage and rights to convey water, electricity, telecommunications and computer media.	Lot 253	F	Lots 254-261, 265 & 264
	Lot 254	G	Lots 253, 254, 256-261, 265 & 264
	Lot 255	H	Lots 253-255, 257-261 265 & 264
	Lot 256	I	Lots 253-256, 258-261, 265 & 264
	Lot 257	J	Lots 253-257, 259-261, 265 & 264
	Lot 258	K	Lots 253-258, 260, 261, 265 & 264
	Lot 259	L	Lots 253-259, 261, 265 & 264
	Lot 260	M	Lots 253-261 & 264
	Lot 265	N	Lots 253-261 & 265
	Lot 264	O	Lots 253-261 & 265

SCHEDULE OF EASEMENTS

Purpose	Servient Tenement	Shown	Grantee
Right to convey electricity in gross.	Lot 253	F	Orion New Zealand Limited
	Lot 254	G	
	Lot 255	H	
	Lot 256	I	
	Lot 257	J	
	Lot 258	K	
	Lot 259	L	
	Lot 260	M	
	Lot 265	N	
	Lot 264	O	
Right to convey telecommunications and computer media in gross.	Lot 253	F	Chorus New Zealand Limited
	Lot 254	G	
	Lot 255	H	
	Lot 256	I	
	Lot 257	J	
	Lot 258	K	
	Lot 259	L	
	Lot 260	M	
	Lot 265	N	
	Lot 264	O	
Right to drain water in gross.	Lot 703	A,P,R,S,T	Selwyn District Council
	RS 39514 (CFR CB 7B/1326)	B	



DAVIE LOVELL·SMITH

PLANNING SURVEYING ENGINEERING

Davie, Lovell-Smith Ltd
 116 Wrights Road,
 PO Box 679, Christchurch 1,
 New Zealand
 Telephone (03) 379-0793,
 E-mail: office@dls.co.nz

Our Ref: E17975

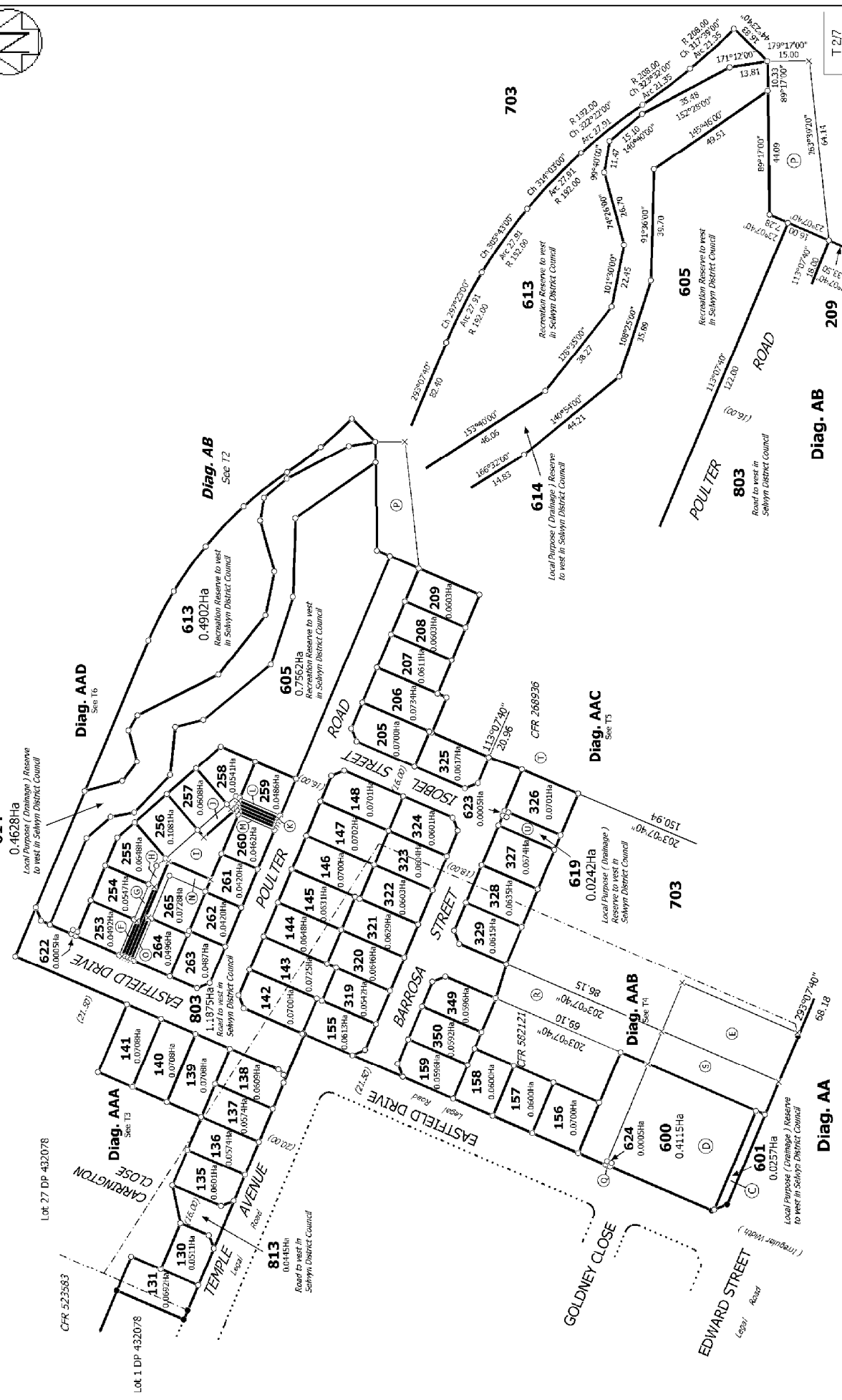
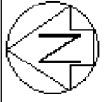
D.P.461935

SCHEDULE OF EASEMENTS

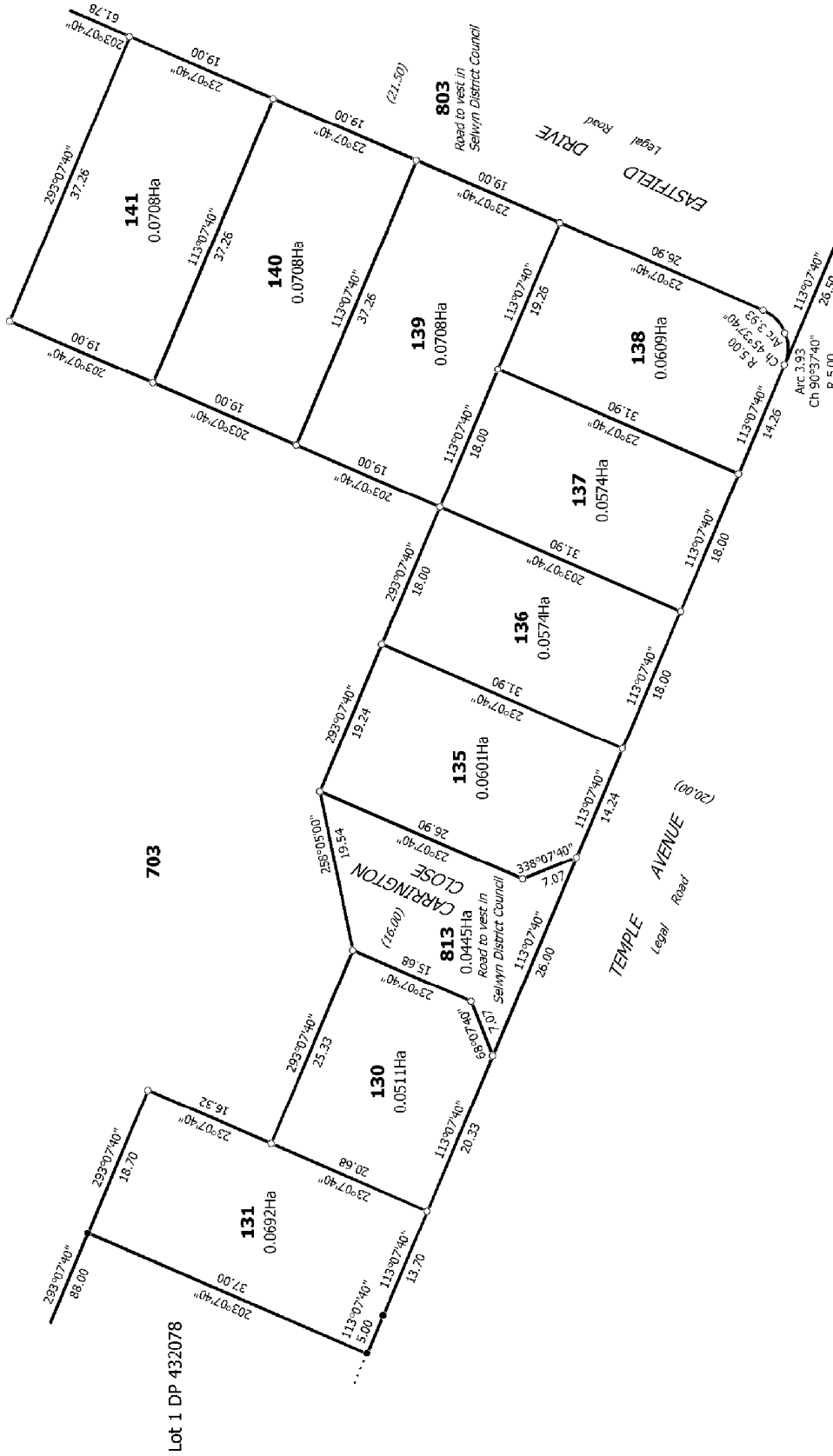
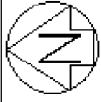
Purpose	Servient Tenement	Shown	Grantee
Right drain sewage in gross.	Lot 253 Lot 254 Lot 255 Lot 256 Lot 257 Lot 258 Lot 259 Lot 260 Lot 265 Lot 264	F G H I J K L M N O	Selwyn District Council

SCHEDULE OF EXISTING EASEMENTS

Purpose	Servient Tenement	Shown	Document
Right to drain water in gross.	Lot 600 Lot 601 Lot 703	D C E, S	EI.8647356.5
Right to convey electricity in gross.	Lot 624	Q	EI.8647356.6



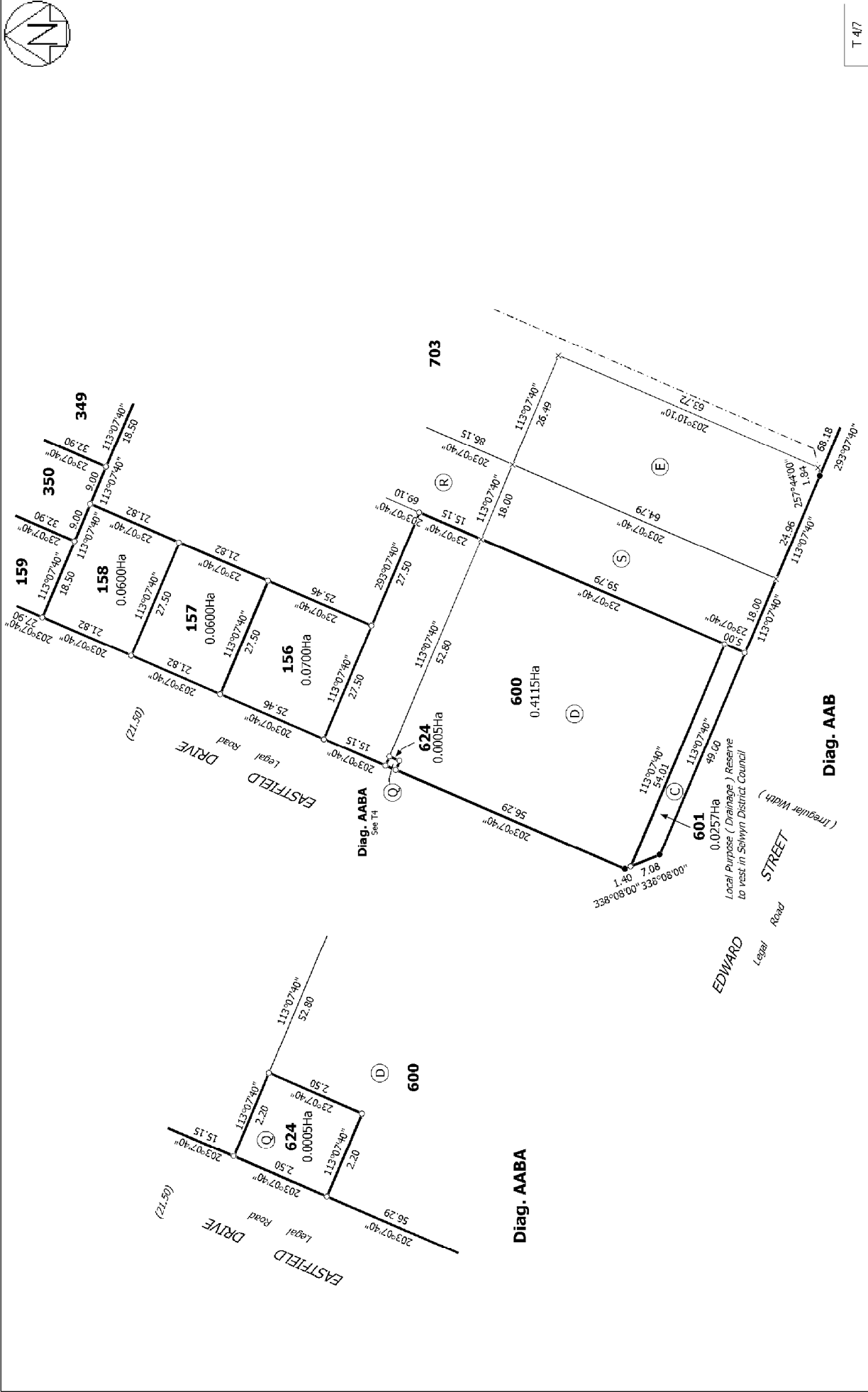
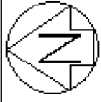
<p>Land District: Canterbury</p> <p>Digitally Generated Plan</p> <p>Generated on: 22/03/2013 2:17pm Page 8 of 13</p>	<p>Lots 130, 131, 135-148, 155-159, 205-209, 253-265, 319-329, 349, 350, 600, 601, 605, 613, 614, 619, 622-624, 703, 803 & 813 being subdivision of Lots 25 & 27 DP 432078 & Lot 2 DP 364266 and proposed easement over RS 39514</p>	<p>Surveyor: Kevin Martin Hayes</p> <p>Firm: Davis Lovell-Smith Ltd</p>	<p>Title Plan</p> <p>LT 461935</p> <p>DRAFT</p>
--	--	---	---



Diag. AAA

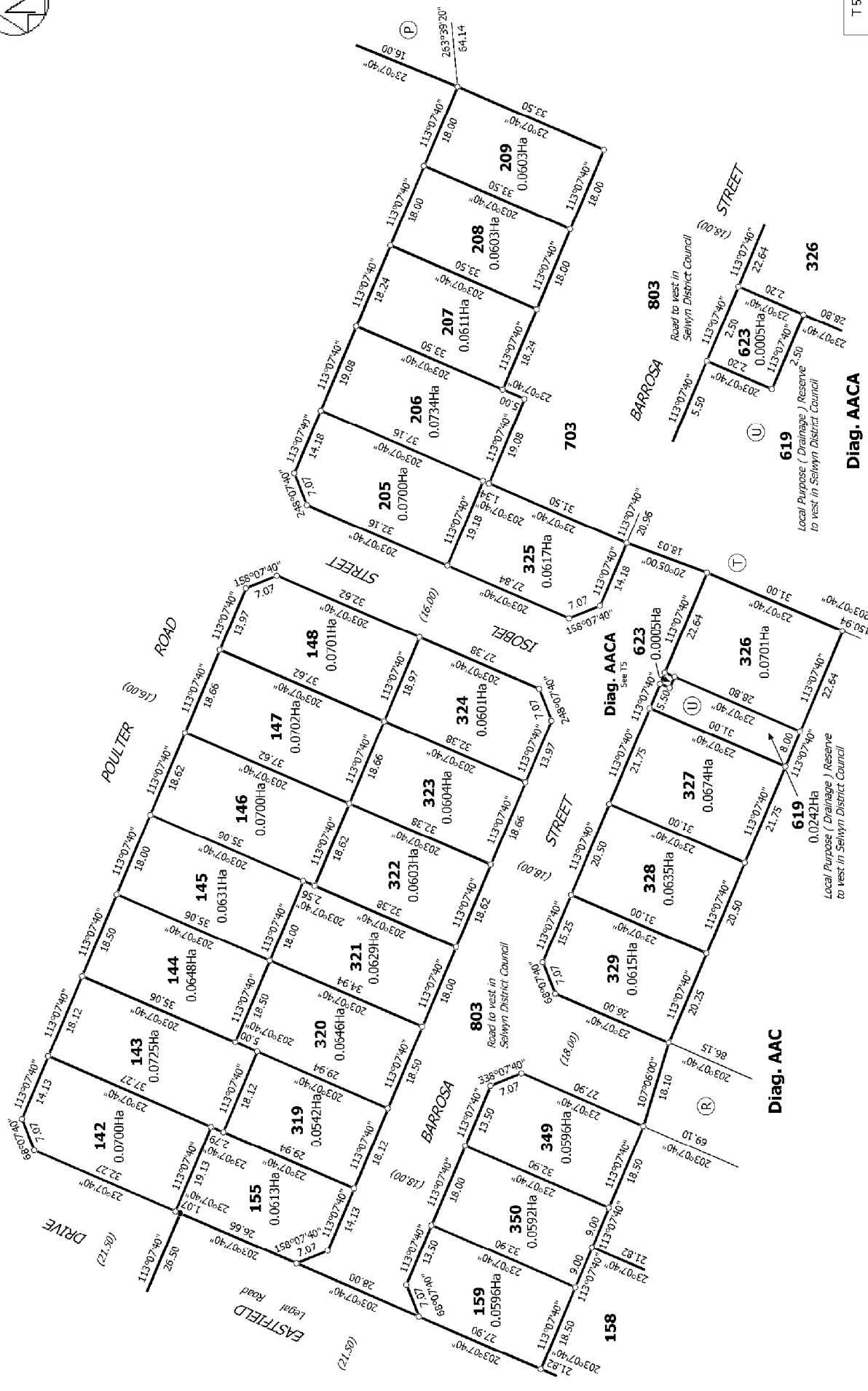
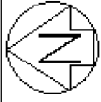
T 3/7

<p>Land District: Canterbury</p> <p>Digitally Generated Plan</p> <p>Generated on: 22/03/2013 2:17pm Page 3 of 13</p>	<p>Lots 130, 131, 135-148, 155-159, 205-209, 253-265, 319-329, 349, 350, 600, 601, 605, 613, 614, 619, 622-624, 703, 803 & 813 being subdivision of Lots 25 & 27 DP 432078 & Lot 2 DP 364266 and proposed easement over RS 39514</p>	<p>Surveyor: Kevin Martin Hayes</p> <p>Firm: Davis Lovell-Smith Ltd</p>	<p>Title Plan</p> <p>LT 461935</p> <p>DRAFT</p>
--	--	---	---



T 4/7

<p>Land District: Canterbury</p> <p>Digitally Generated Plan</p> <p>Generated on: 22/03/2013 2:17pm Page 10 of 13</p>	<p>Lots 130, 131, 135-148, 155-159, 205-209, 253-265, 319-329, 349, 350, 600, 601, 605, 613, 614, 619, 622-624, 703, 803 & 813 being subdivision of Lots 25 & 27 DP 432078 & Lot 2 DP 364266 and proposed easement over RS 39514</p>	<p>Surveyor: Kevin Martin Hayes</p> <p>Firm: Davis Lovell-Smith Ltd</p>	<p>Title Plan</p> <p>LT 461935</p> <p>DRAFT</p>
---	--	---	---



T 5/7

Land District: Canterbury	Title Plan LT 461935 DRAFT
Digitally Generated Plan Generated on: 22/03/2013 2:17pm Page 11 of 13	Surveyor: Kevin Martin Hayes Firm: Davis Lovell-Smith Ltd
Lots 130, 131, 135-148, 155-159, 205-209, 253-265, 319-329, 349, 350, 600, 601, 605, 613, 614, 619, 622-624, 703, 803 & 813 being subdivision of Lots 25 & 27 DP 432078 & Lot 2 DP 364266 and proposed easement over RS 39514	Diag. AAC A

